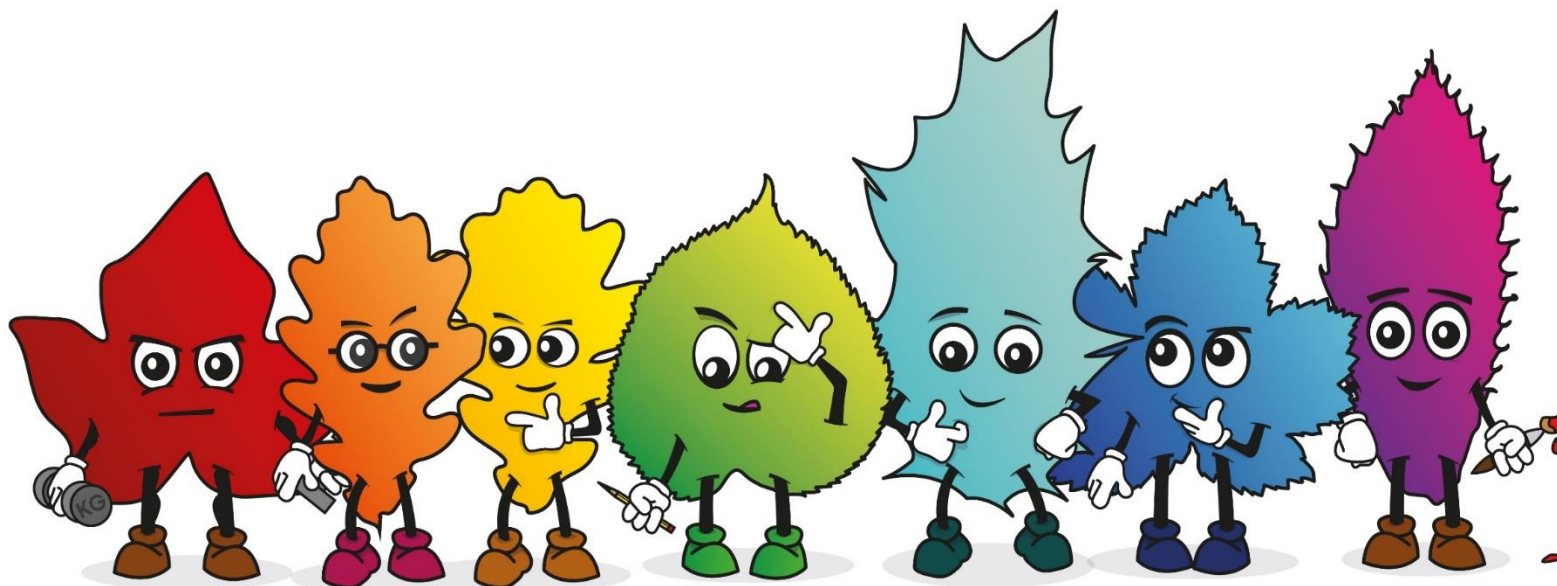


# Transition Information

## Year 6

### 2023-2024



# Meet the Year 6 team...

## Sycamore Class



Mrs Helen Rident (Mon-Wed)  
Mrs Vicky Davies (Thurs – Fri)

## Juniper Class



Mrs Ellis Timms  
Year Lead

## Hawthorn Class



Miss Phoebe Hedges



Mrs Rachel Kitcher  
(Thurs – Fri)  
Learning Support  
Assistant



Mrs Carly Wheeler-Bailey  
(Mon-Weds)  
Learning Support  
Assistant



Mrs Sam Humphry  
Learning Support  
Assistant



Mrs Mel Cranston  
Learning Support  
Assistant



Mrs Jane Bellows  
Learning Support  
Assistant

# Curriculum Overview



- The Victorians
- World War II
- Fantastic Beasts and Where to Find Them
- Only We Can Save the World!
- Theme Parks

SRE in the Summer Term – more information to follow

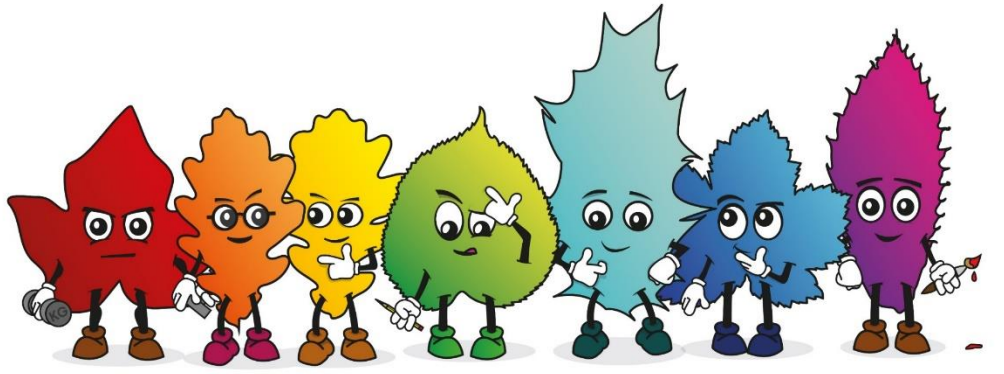


## Year 6 – Long Term Overview – 2024-2025

Year 6	Autumn		Spring		Summer	
TOPIC TITLE	The Victorians	WWII	Fantastic Beasts and where to find them	Only we can save the world!	Theme Parks	
<b>Enquiry question</b>	<i>How did the industrial revolution change Britain during the Victorian era?</i>	<i>What was it like to live in Southampton during WWII?</i>	<i>What are the Galapagos islands, where are they and how were they formed?</i>	<i>How does transportation of the earth's resources impact our planet?</i>	<i>What do designers consider when creating a theme park?</i>	
<b>Topic linked subjects</b>	<b>History</b> Victorians- Industrial revolution	<b>History</b> WW2- Local History study	<b>Geography</b> Galapagos Islands	<b>Geography</b> Climate Change/ World resources	<b>DT</b> Construction / Electrical control / Mechanisms	
	<b>Art</b> Drawing/Printing	<b>DT</b> Textiles	<b>Science</b> Classification and evolution	<b>DT</b> Food and Nutrition	<b>Music</b> Using technology	
		<b>Art</b> Painting	<b>Art</b> Sculpture	<b>Music</b> Inspirational musicians	<b>Computing</b> Creating media Website creation	
<b>Stand-alone subjects</b>	<b>Science</b> Light	<b>Science</b> Controlling electrical circuits	<b>Computing</b> Programming Variables in games		<b>Science</b> Sound	
	<b>Computing</b> Data and Information Spreadsheets				<b>Computing</b> Systems and Networks	
	<b>RE</b> Rites of Passage	<b>RE</b> Interpretation	<b>RE</b> The One Life	<b>RE</b> Freedom	<b>RE</b> Ritual	<b>RE</b> Peace
	<b>Games</b> Football	<b>Games</b> Basketball	<b>Games</b> Golf	<b>Games</b> Hockey	<b>Games</b> Handball	<b>Games</b> Athletics
	<b>PE</b> OAA	<b>PE</b> Bike Ability	<b>PE</b> Gymnastics	<b>PE</b> Dance	<b>PE</b> Yoga	<b>PE</b> Dance
	<b>French</b> The date	<b>French</b> Do you have a pet?	<b>French</b> Clothes	<b>French</b> At school	<b>French</b> At the weekend	
	<b>PSHE</b> Me and My Relationships	<b>PSHE</b> Rights and Responsibilities	<b>PSHE</b> Keeping Myself Safe	<b>PSHE</b> Being My Best	<b>PSHE</b> Valuing Difference	<b>PSHE</b> Growing and Changing including SRE
<b>Trips offsite and visitors into school</b>	Osborne House / PGL Little Canada- Residential	Southampton Tudor House / Solent sky museum		Aspens- School kitchen staff	<u>Paultons Park</u>	
<b>Whole School theme days this half term</b>	Artist Day	WW1 Remembrance Day	Children's mental health week	World Book Day World Maths Day	Earth Day World Cultural Diversity Day	World Music Day



# Our 6 learning behaviours



- Resilience
- Independence
- Creativity
- Team work
- Critical thinking
- Reflection



# Timetable

**8:40am** - School gates open and children can go into school

8:50am - Registration taken

8:50am – 10:35am - First core session (Maths/English inc. mental maths fluency, spelling and reading) and assemblies

10:40- 10:55am - Break time

10:55am – 12:05 – Second core session

12:05 - 1:00pm - Lunch time

1:00 – 3:00pm – Curriculum subjects (History, French, Science, Art, Games etc.)

3:00 – 3:20pm – Class story and circle time

**3:20pm** - End of day

# Opportunities

- School roles – House Captains, Sports Leaders, Play Leaders, Pupil Librarians, School Council, Eco-Rep, Learning Council
- Isle of Wight Residential – room selection email today
- Trips and Visitors – Solent Sky, Paultons Park
- Bikeability
- Year 6 Summer Production
- School-organised Leavers' Party





# Homework

- Weekly homework
  - Personal reading (recorded in planners)
  - English (Reading or SPaG activity – 30 mins)
  - Maths (Worksheets or SATs revision guide)
- Half termly projects (optional)
- Weekly Spellings
- SATs revision guides from January (more details at our SATs Parent Information Evening)



# Brain Fit



- New for September 2024
- Weekly lessons
- Learn how the brain is built and shaped
- Learn what we need for our brains to be at their best – people who feel better, do better!
- Help us to develop the skills to learn and play and manage the stressors that may come our way



## TRICK BOX

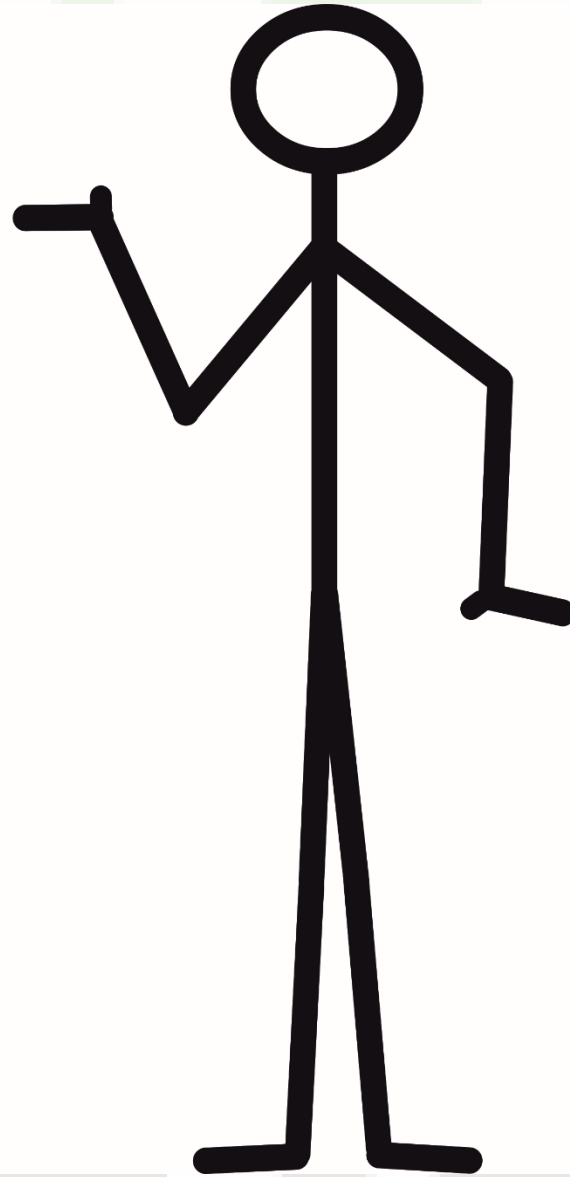
Trick Box programmes develop personal skills in 4 key areas **through positive habit formation.**

### Confidence

**Confident** -  
thinking  
body-language  
self-beliefs  
actions

### Communication

**Positive** -  
communication  
choices  
behaviour



### Calm

**Mindful** -  
emotional management  
relaxation  
solution thinking

### Creativity

**Creative** -  
mindset  
interests  
opportunities

# General Reminders

- Uniform and PE kits
- Jewellery restrictions – single studs only
- Stationery packs provided by school - NO PENCIL CASES
- Named reusable drinks bottle
- Mobile phones – Office start/end of day
- Home School Diaries – reading, communication, support



# How can you help?

- Times Tables and Spelling practice
- Reading
- Talk
- Bedtimes and screen time
- E-safety, internet use, mobile phones, etc.



# Website and Social Media Channels

